



GOLDIE BRONZE™

ABOUT GOLDIE BRONZE™

Goldie Bronze™ comes in two types of powder - SOFT and HARD. SOFT is very soft and is ideal for working with stamps and textures. HARD creates a very stiff clay to work with. For best results mix an equal amount of the two powders together when you constitute the clay.

Goldie Bronze™ is an environmentally friendly product. It contains approximately 90% copper and 10% tin. The binders are organic and non toxic. The container that the powder comes in is deliberately larger than needed so it can be reused afterwards. Please do your bit for the environment and keep the container for future use (non food use only).

Goldie Bronze™ shrinks by about 5% - 9% on firing, depending on the shape and the size of the piece. Dried clay can be ground up to a powder and reconstituted. Goldie Bronze™ is simple and economical to use.

TO MIX

- First, stir the powdered clay well in its original container to ensure it is properly mixed, and then put the desired amount of powder into a smaller container.
- Add about a dozen drops of water or spray in a little water and mix with a knife or spoon, adding more water as required, until you get a clay of a plasticine like consistency.
- Roll the lump clay out thinly and fold over. Roll again, rolling away from the fold. Repeat this action several times. This is very important to ensure that all the air is removed from the clay and to get a smooth consistency before using. Insert a plastic bag and wait 30 minutes.

TO USE

- To join elements in Goldie Bronze™ clay mix a little powder with water to make a paste. Elements can also be joined with the water only method in the same way as silver clay.
- Pieces can be dried naturally or by using heat, e.g. on a hotplate or in a dehydrator. Dry at 90°C (194°F) or lower. Higher temperatures may cause cracking.
- Remember to always clean your tools well between using different types of metal clay to avoid cross contamination.

TO FIRE

- Ensure the clay is completely dry before firing. Any moisture will boil and ruin the piece.
- Lay the pieces in a stainless steel firing container on a layer of activated coconut shell carbon with a minimum depth 1cm (1/2") under the pieces. Make sure the pieces are at least 1cm (1/2") apart. Place the open container into a cold kiln and fire at full ramp to 350°C (662°F) and hold for 30 minutes.
- Carefully remove the container from the kiln and place on a heatproof surface. Fill the container with a layer of activated coconut shell carbon with a minimum depth 1cm (1/2") over the pieces. Cover with a stainless steel lid and place back into the kiln. Full ramp to 820°C (1508°F) and hold for 40 minutes.
- Fired pieces can be removed from the kiln hot or cold.

SAFETY PRECAUTIONS

Do not breathe in the powder or ingest Goldie Bronze™. Always use the appropriate safety equipment when working with a hot kiln and fire in a well ventilated area. Goldie Bronze™ is non toxic and does not contain any harmful chemicals. There have been no reports of any allergic reaction to Goldie Bronze™, however people with allergies should be aware of the possibility of a reaction and use with care.

www.goldieclay.com

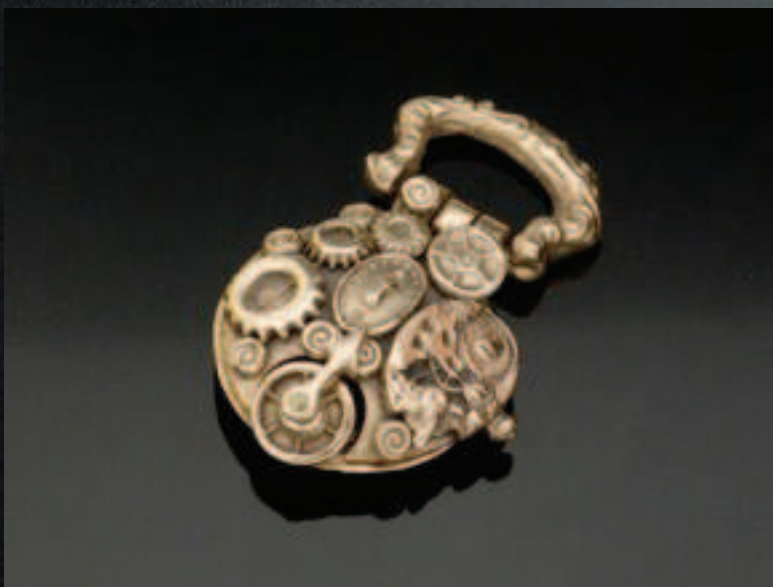
Examples of work carried out
with
GOLDIE BRONZE™



ANNA MAZOŃ, WWW.DRAKONARIA.COM



SABINE ALIENOR SINGERY, [WWW.SABINEALIENOR.COM](http://www.sabinealienor.com)



ANNA FIDECKA, WWW.FIANN.PL



ANNA MAZOŃ, WWW.DRAKONARIA.COM



Anna Mazoń
www.drakonaria.com

ANNA FIDECKA, [WWW.FIANN.PL](http://www.fiann.pl)



ZINA CREATION, WWW.ZINACREATION.CANALBLOG.COM



ZINA
CREATION

ANNA FIDECKA, WWW.FIANN.PL



ANNA MAZÓN, WWW.DRAKONARIA.COM



SABINE ALIENOR SINGERY, WWW.SABINEALIENOR.COM



ANNA FIDECKA, WWW.FIANN.PL



WALDO IŁOWIECKI, WWW.METALCLAYJEWELLERY.COM



ANNA FIDECKA, WWW.FIANN.PL



INFORMATION ON WHERE TO
BUY GOLDIE BRONZE™
VISIT WWW.GOLDIECLAY.COM

ENJOY